

J1

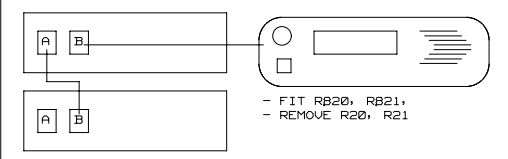
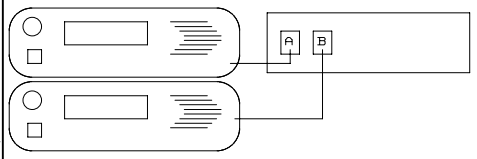
1	RX_AUDIO
2	1.3VB
3	RD_CH_TXD
4	RD_CH_PTT
5	RD_CH_MIC_AUDIO
6	ISO_GND
7	RD_CH_RXD
8	DGND
9	RD_CH_ON_OFF
10	RD_VOL_WIP_DC
11	RD_CH_SPI_DO
12	RD_CH_LE
13	RD_CH_GPI01
14	RD_3V3
15	RD_CH_SPI_DI
16	RD_CH_SPI_CLK
17	RD_SPK-
18	RD_SPK+

SK18MM

MULTI-HEAD CONFIG

MULTI-RADIO CONFIG

TELEMETRY HEAD



FIT AS 0 OHM LINK:
R900, R901, R910, R912, R916, 918

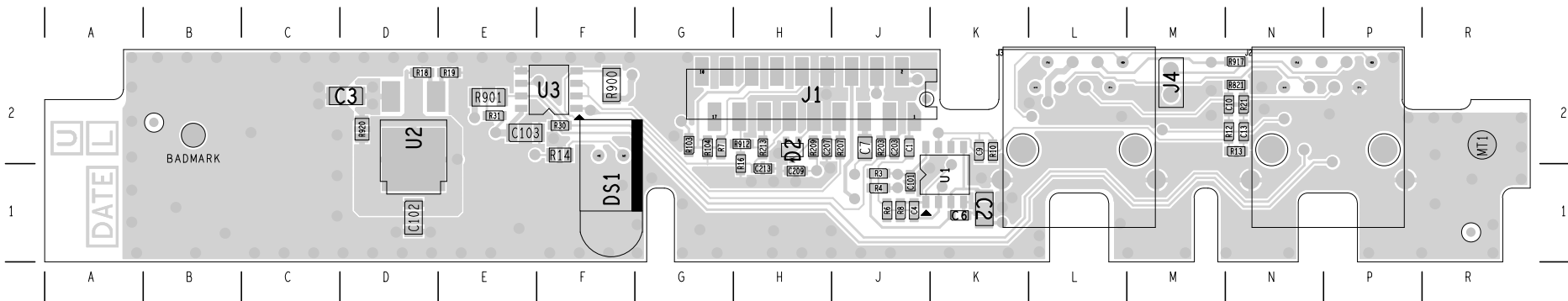
FIT AS 560 OHM: R920

CHANGE TO 0 OHM LINK:
C1, R6, R8, R9
C10, R12, R10, C7
(NOTE DIFFERENT PAD SIZES)

DO NOT INSTALL:
U1, U2, U3, J2
R911, R915, R917
R16, R15, R13, R21, R30, R31
R1, R2, R3, R4, R104, R18, R19, R16, R213
C4, C17, C15, C13, C9, C101, C2
C102, C213
D3

05A	ADDRESS A RE-CIRCULATION ISSUE	EDWIN T	CRAIG M	DAVE E	PETER C	18/01/06
04B	CORRECT IPN REVISION IN TITLE BLK	EDWIN T	CHRIS K	DAVE E	PETER C	29/11/05
04A	INCLUDE CHANGES REQUIRED FOR FESA	EDWIN T	CHRIS K	DAVE E	PETER C	15/11/05
REV/ISS	AMENDMENTS	DRAWN	CHKD	D.O.	APVD	DATE

© TAIT ELECTRONICS		A1
TM8200 RADIO REMOTE PCB		
IPN: 220-01720-05	ISSUE: A	VARIANT NUMBER: -
FILE DATE: Wed Jan 18 13:47:15 2006		
ENGINEER: SANDERS C	FILE NAME: 220_01720	SHEET NUMBER: 1 OF 1



TAIT ELECTRONICS	IPN: 220-01720-05	ISS: A	DATE: 16Jan06	SCALE: NTS
TM8200 Radio Remote LAYOUT-PRIMARY-SIDE				

